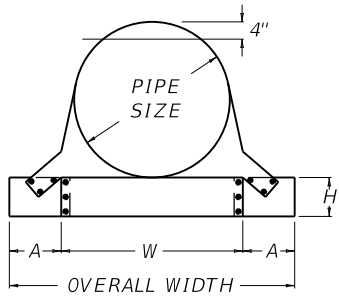
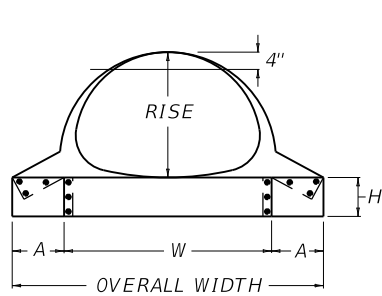


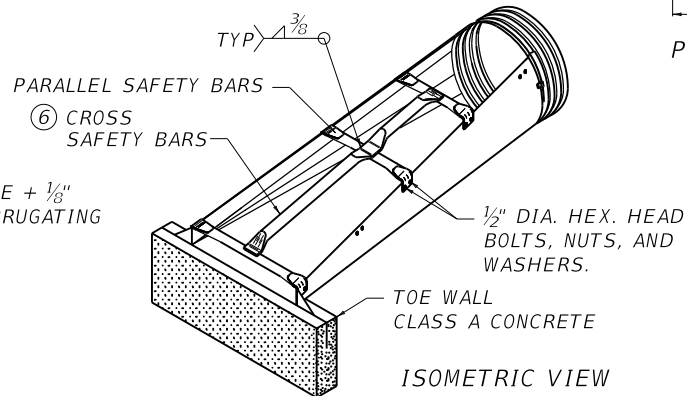
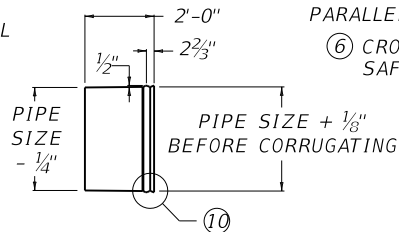
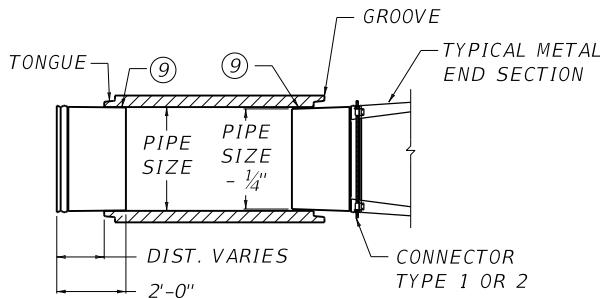
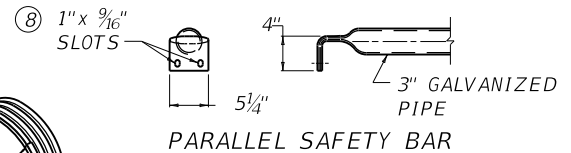
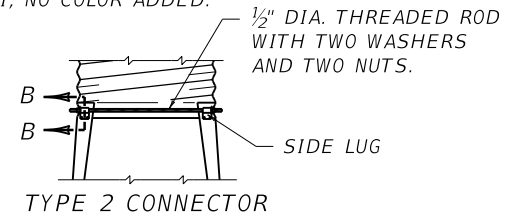
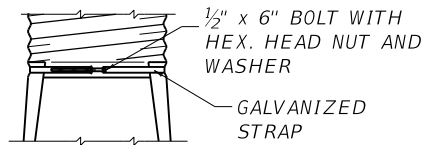
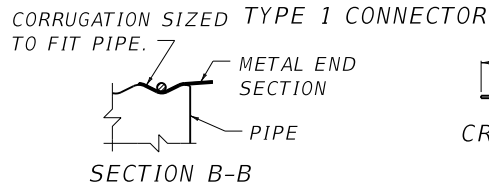
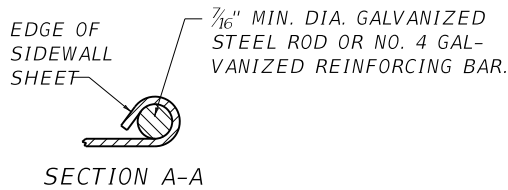
SIDE ELEVATION



END SECT. FRONT VIEW CIRCULAR PIPE



END SECT. FRONT VIEW ARCHED PIPE



~ NOTES ~

- BID ITEM AND UNIT TO BID
METAL END SECTION TY \otimes \triangle IN EACH
- \otimes 3 = CROSSDRAIN STRUCTURE ON 4:1 SLOPE, 4 = CROSSDRAIN STRUCTURE ON 6:1 SLOPE
 \triangle SIZE IN INCHES
- BID ITEM EXAMPLE: METAL END SECTION TY 3-15 IN
- THE CONTRACT UNIT PRICE EACH FOR METAL END SECTION SHALL INCLUDE CLASS A CONCRETE, EXCAVATION, AND ALL INCIDENTALS NECESSARY TO COMPLETE ONE INSTALLATION AS DETAILED.
- FABRICATE METAL END SECTIONS FROM GALVANIZED SHEETS CONFORMING TO AASHTO M218.
 - METAL END SECTIONS & TAPERED SLEEVES SHALL BE ASPHALT COATED IN ACCORDANCE WITH SECT. 806 OF THE CURRENT KENTUCKY STANDARD SPECIFICATIONS FOR ROAD & BRIDGE CONSTRUCTION. ASPHALT COATING IS NOT REQUIRED ON SAFETY BARS.
 - SAFETY BARS SHALL BE REQUIRED ON ALL 30" ROUND PIPE AND LARGER.
 - SAFETY BARS SHALL BE REQUIRED ON ALL 24" ELLIPTICAL EQUIVALENT PIPE AND LARGER.
 - SAFETY BARS SHALL BE CONSTRUCTED OF SCHEDULE 40 GALVANIZED STEEL PIPE (COML. GRADE).
 - CROSS SAFETY BARS SHALL BE SPACED A MAXIMUM OF 30" O.C. AND WELDED TO PARALLEL SAFETY BARS. GALVANIZING REQUIRED AFTER FABRICATION.
 - THE TAPERED SLEEVE SHALL BE GALVANIZED SMOOTH METAL CONFORMING TO AASHTO M218, WITH A WALL THICKNESS AS FOLLOWS: 18" DIA. OR LESS = .079", 21" DIA. OR LARGER = .109".
 - SLOTTED HOLES FOR SAFETY BAR ATTACHMENT SHALL BE PUNCHED PRIOR TO GALVANIZING. FIELD DRILLING OF HOLES SHALL NOT BE PERMITTED.
 - WATERPROOF MASTIC CONFORMING TO 807.02.03 OF THE CURRENT KENTUCKY STANDARD SPECIFICATIONS FOR ROAD AND BRIDGE CONSTRUCTION SHALL BE PLACED IN THE VOID BETWEEN THE TAPERED SLEEVE AND CONCRETE PIPE.
 - FORM 1/2" x 2 2/3" CORRUGATIONS. MAINTAIN INSIDE DIAMETER OF SLEEVE. FINISHED END TO BE THE SAME DIAMETER AS CORRUGATED STEEL PIPE DIAMETER.
 - ALL MISCELLANEOUS HARDWARE SHALL COMPLY WITH AASHTO M36.
 - THE WELDS USED IN THE MANUFACTURE OF THE TAPERED SLEEVE FOR ELLIPTICAL CONCRETE PIPE SHALL BE REPAIRED IN ACCORDANCE WITH AASHTO M36 USING ZINC OXIDE-ZINC DUST PRIMER, FEDERAL SPECIFICATION TT-P-641, TYPE II, NO COLOR ADDED.

USE WITH CUR. STD. DWG.
RDB-160

KENTUCKY
DEPARTMENT OF HIGHWAYS

METAL END SECTION
TYPE 3 AND 4
(CROSS STRUCTURES)

STANDARD DRAWING NO. RDB-155-02

SUBMITTED *[Signature]* 12-01-15
DATE
APPROVED *[Signature]* 12-01-15
DATE
STATE HIGHWAY ENGINEER